

PRESERVING DENTIN IN ITS NATURAL HABITAT? CHALLENGE ACCEPTED.



Shaping • Cleaning • Obturation

TruNatomy®

SAFEGUARD THE ROOT CANAL'S NATURAL ANATOMY WITH TRUNATOMY®

When performing root canals, without preservation, much can be lost. Dentsply Sirona TruNatomy® treatment solution helps safeguard the natural anatomy of the root canal system. Specially designed to maintain structural dentin and tooth integrity, TruNatomy® ensures sufficient room for cleaning and disinfecting using the dedicated irrigation needle and the SmartLite Pro EndoActivator™ - bringing next-level care to patients.

Unlock next-level care across the entire workflow.



SHAPING

Why should you remove more when you can preserve? A unique combination of features enables efficient root canal treatment while removing dentin only where needed.¹



CLEANING

The irrigation needle as well as the EndoActivator® are designed to provide enhanced cleaning.



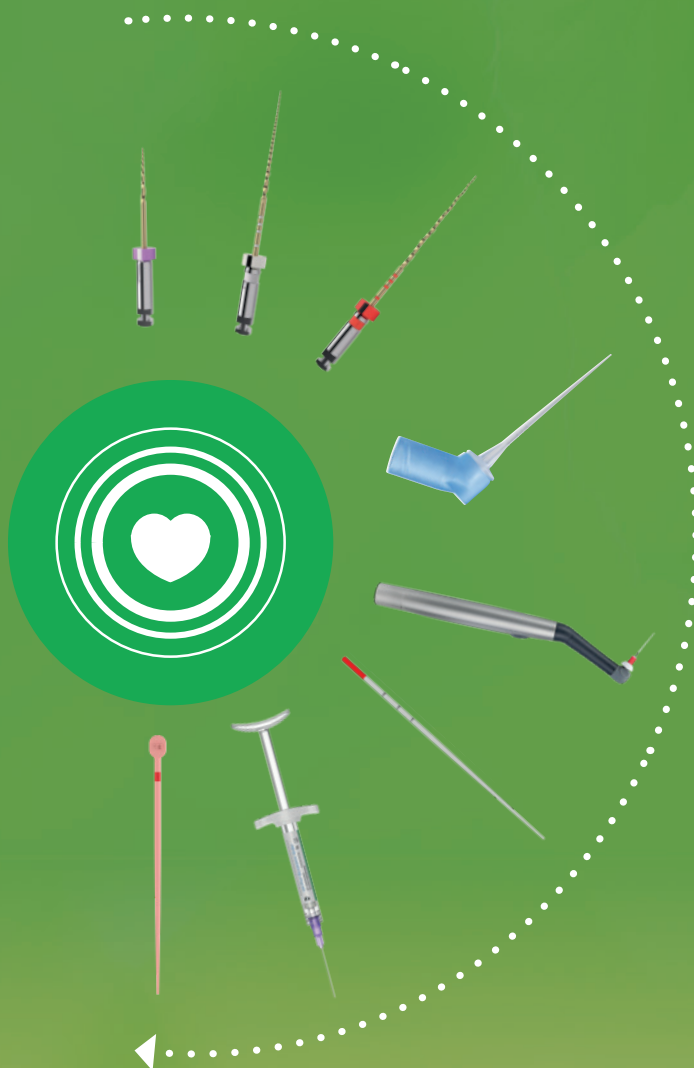
OBTURATION

Gain confidence in your obturation with a sealer that creates an ideal environment for healing and Conform Fit® Gutta-Percha Points, designed to match the precise shapes created by the files.



RESTORATION

Facing every step with confidence with Dentsply Sirona restorative materials.



Use this QR code to access scientific data

SHAPING

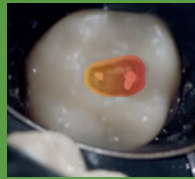
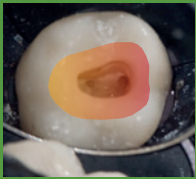
CHALLENGE:

PRESERVING STRUCTURAL STRENGTH.

Why dentin preservation? Research has shown that instrumentation can compromise the strength of the tooth — but strength is restored when more dentin is saved.² Part of saving more teeth is saving more tooth.



VS

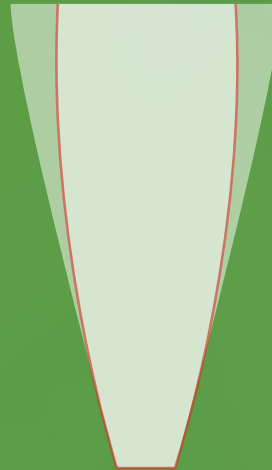


No need for conventional straight line access

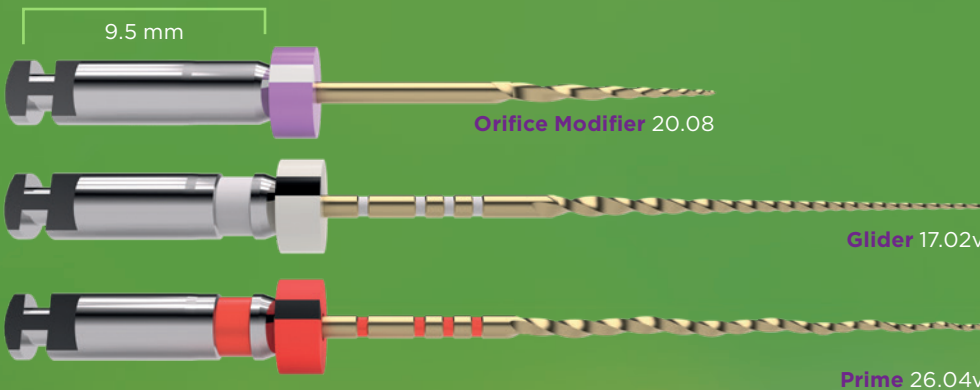
- TruNatomy® Orifice Modifier shapes the orifice to create the entry point without straight line access.³
- TruNatomy® preserves dentin in the peri-cervical area while ensuring sufficient apical debridement.³

Efficiency with less dentin removal

- A combination of dedicated heat-treated NITI with a 0.8 mm wire to better respect the root canal.⁴
- Patented off-centered cross section shaping files with regressive taper for superior efficiency.⁵



- TruNatomy® Prime
- Generic progressive tapered file



All files operate at 500 rpm & 1.5 Ncm

2. Sedgley CM, Messer HH. Are endodontically treated teeth more brittle? J Endod. 1992 Jul;18(7):332-5
3. Internal data on file. For more information, contact Consumables-Data-Requests@dentsplysirona.com
4. Versus up to 1.2 mm for most generic variable tapered files
5. Versus progressive taper design

CLEANING

CHALLENGE:

EFFICIENT DISINFECTION TO THE APEX.



IRRIGATION NEEDLE



Flexible

- The irrigation needle features a flexible body for apical access with no resistance or damage to dentinal walls.³
- Soft polypropylene material delivers irrigation solutions close to the apex.³



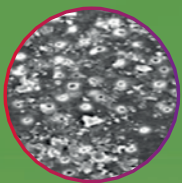
Effective

- Back-to-back two-sided vent design maintains balance irrigation throughout canal. Aimed directly at the dentinal wall.³

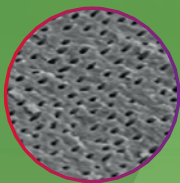
ENDOACTIVATOR®

More opened dentinal tubules

- Passive soaks aren't enough. Activating irrigants can help produce a surface with more opened dentinal tubules, allowing for better obturation of lateral and accessory canals.⁶



Unactivated dentin surface



After irrigant activation

SmartLite Pro EndoActivator™

- Following the protocol provides more than 150 times higher bacteria reduction vs. 1 minute bleach soak.³



6. Kanter V, Weldon E, Nair U, et al. A quantitative and qualitative analysis of ultrasonic versus sonic endodontic systems on canal cleanliness and obturation. *Oral Surg Oral Med Oral Pathol Oral Radiol Endod.* 2011;112(6):809-813. doi:10.1016/j.tripleo.2011.06.002

OBTURATION

CHALLENGE:

OPTIMAL PERFORMANCE IN SMALLER SHAPES.

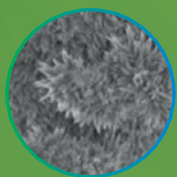
AH PLUS® BIOCERAMIC SEALER

Self healing

- Bioactive seal creates ideal environment to produce HA and promote healing.³
- Provides a high pH for antimicrobial effect that promotes an osteogenic response.⁷

Gap-free bonding

- Sealer produces a wide range of hydroxyapatite crystals within dentinal tubules for gap-free bond between canal wall and gutta-percha.³



Hydroxyapatite

CONFORM FIT® GUTTA-PERCHA POINT



Precise

- Variable tapered to match the shapes created by TruNatomy® files.
- Precise fit for the right tug back.
- 40% more accurate than traditional hand-rolled gutta percha.⁸



Safe

No natural rubber latex offers safety for patients with latex allergies.

Triple Lock™
your obturation




7. Holt DM et al. "The anti-microbial effect against enterococcus faecalis and the compressive strength of two types of mineral trioxide aggregate mixed with sterile water or 2% chlorhexidine liquid." J Endod. 2007 Jul;33(7):844-7

8. Peters, O. A., K. Schonenberger, and A. Laib. "Effects of Four Ni-Ti Preparation Techniques on Root Canal Geometry Assessed by Micro Computed Tomography." International Endodontic Journal Int Endod J 34.3 (2001): 221-30


TruNatomy® Orifice Modifier (20.08)

	3 x 16 mm	TRNOM16
--	-----------	---------


TruNatomy® Glider (17.02v)

	3 x 21 mm	TRNGLIDE21
	3 x 25 mm	TRNGLIDE25
	3 x 31 mm	TRNGLIDE31


TruNatomy® Shaping File - Small (20.04v)

	3 x 21 mm	TRNSMALL21
	3 x 25 mm	TRNSMALL25
	3 x 31 mm	TRNSMALL31


TruNatomy® Shaping File - Prime (26.04v)

	3 x 21 mm	TRNPRIME21
	3 x 25 mm	TRNPRIME25
	3 x 31 mm	TRNPRIME31




TruNatomy® Shaping File - Medium (36.03v)

	3 x 21 mm	TRNMEDIUM21
	3 x 25 mm	TRNMEDIUM25
	3 x 31 mm	TRNMEDIUM31







TruNatomy® Shaping File - Large (46.02v)

	3 x 21 mm	TRNLARGE21
	3 x 25 mm	TRNLARGE25
	3 x 31 mm	TRNLARGE31

TruNatomy® Sequence

	3 x 21 mm	TRNSQC21
	3 x 25 mm	TRNSQC25
	3 x 31 mm	TRNSQC31

TruNatomy® Assortment

	5 x 21 mm	TRNAST21
	5 x 25 mm	TRNAST25
	5 x 31 mm	TRNAST31
	6 x 21 mm	TRNAST621 (with Large size)
	6 x 25 mm	TRNAST625 (with Large size)
	6 x 31 mm	TRNAST631 (with Large size)

Rx only

Files	Dentsply Tusla Dental Specialties, 608 Rolling Hills Drive, Johnson City, TN 37604, USA
Gutta-Percha & Absorbent Points	Dentsply Tusla Dental Specialties, 608 Rolling Hills Drive, Johnson City, TN 37604, USA
Irrigation Needle	Produits Dentaires SA, Rue des Bosquets 18, CH-1800, Vevey
AH Plus® Bioceramic Sealer Manufactured for	Dentsply Tusla Dental Specialties, 608 Rolling Hills Drive, Johnson City, TN 37604, USA
SmartLite® Pro EndoActivator®	Dentsply Sirona, 1301 Smile Way York, PA 17404 USA


Irrigation Needle

	x40	DSIN30G40	30 Gauge
---	-----	-----------	----------


TruNatomy® Conform Fit® Gutta-Percha Obturation Points

	x60	T 00 TNGP F00 SML	Small
	x60	T 00 TNGP F00 PRM	Prime
	x60	T 00 TNGP F00 MED	Medium
	x60	T 00 TNGP F00 LRG	Large
	x60	T 00 TNGP F00 AST	Assortment
	x60	T 00 TNGP F00 AS4	Assortment (4 sizes)


TruNatomy® Treatment Solution Kit

	T 00 TNYM TSO KIT		
	4	TruNatomy® Sequence	3-Files 25 mm
	2	TruNatomy® Orifice Modifier	3- Files 16 mm
	2	TruNatomy® Glider	3- Files 25 mm
	2	TruNatomy® Small	3- Files 25 mm
	2	TruNatomy® Prime	3- Files 25 mm
	2	TruNatomy® Medium	3- Files 25 mm
	1	TruNatomy® Absorbent Points Assortment	
	1	TruNatomy® Conform Fit® Assortment	
	2	Irrigation Needle (5 units)	

AH Plus® Bioceramic Sealer

	Starter Kit	AHPBIOSEAL
	Syringe Refill	AHPBIOREFILL
	Cannula Refill	AHPBIOCANNULA

SmartLite® Pro EndoActivator

	644431	Complete kit
	644432	Refill kit
	644434	100 Barrier Sleeves
	644435	25 Tips Small (15/02) 22 mm
	644437	25 Tips Medium Long (25/04) 28 mm
	644438	Attachment

TruNatomy® Absorbent Points

	x180	B ST TNPP 000 SML	Small
	x180	B ST TNPP 000 PRM	Prime
	x180	B ST TNPP 000 MED	Medium
	x180	T ST TNPP 000 LRG	Large
	x180	T ST TNPP 000 LRG	Assortment