

Your Order Form for TiBase, Abutment Screw and ScanPost



Company name	
Surname, first name	
House number, street	
Zip code, City	
Phone	Fax
E-Mail	
Customer number	

TiBase and ScanPost are delivered without Scanbody. Please order this separately!

The following components are compatible depending on the connection:

Connection	Scanbodies for Omnicam ⁴⁾ (can also be used for Primescan)		Scanbodies for Bluecam ⁴⁾	
	REF	Quantity in units	REF	Quantity in units
S	6431311		6431295	
L	6431329		6431303	


¹⁾ 1x Titanium base, 1x Abutment screw, ²⁾ 2x Abutment screw, ³⁾ 1x ScanPost, 1x Abutment screw, ⁴⁾ 36x Scanbody

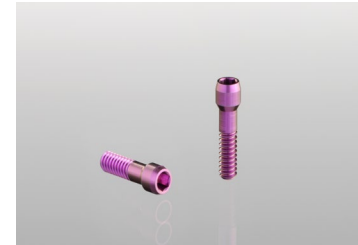
⁵⁾ Not all products may be available in your country.










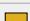





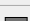
Please also refer to the „TiBase Material Compatibility“ overview on my.cerec.com.

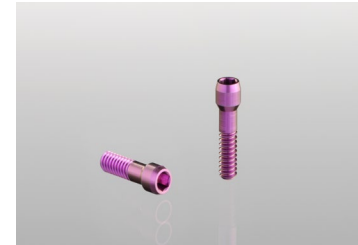
Manufacturer / Implant	Implant diameter	Platform	Con- nection	TiBase ^{1),5)}			Tightening torque	Abutment Screw ^{2),5)}			ScanPost ^{3),5)}		
				REF	Quantity in units	REF		Quantity in units	REF	Quantity in units			
Dentsply Sirona Implants PrimeTaper EV	3.0		XS	S	AT EV 3.0 GH1 S	6586304	25 Ncm	AT EV 3.0	6586262	AT EV 3.0 S	6586353		
	3.6		S	S	AT EV 3.6 GH1 S	6586312		AT EV 3.6	6586270	AT EV 3.6 S	6586361		
	4.2		M	L	AT EV 4.2 GH1 L	6586320		AT EV 4.2	6586288	AT EV 4.2 L	6586379		
	4.8 / 5.4		L	L	AT EV 4.8 GH1 L	6586338		AT EV 4.8	6586296	AT EV 4.8 L	6586387		
Dentsply Sirona Implants OmniTaper EV	3.0		XS	S	AT EV 3.0 GH1 S	6586304	25 Ncm	AT EV 3.0	6586262	AT EV 3.0 S	6586353		
	3.4		S	S	AT EV 3.6 GH1 S	6586312		AT EV 3.6	6586270	AT EV 3.6 S	6586361		
	3.8		M	L	AT EV 4.2 GH1 L	6586320		AT EV 4.2	6586288	AT EV 4.2 L	6586379		
	4.5		L	L	AT EV 4.8 GH1 L	6586338		AT EV 4.8	6586296	AT EV 4.8 L	6586387		
	5.5		XL	L	AT EV 5.4 GH1 L	6586346		AT EV 5.4	6593714	AT EV 5.4 L	6586395		
Dentsply Sirona Implants Astra Tech Implant EV Note: Astra Tech Implant EV and OsseoSpeed EV have the same prosthetic interface	3.0		XS	S	AT EV 3.0 GH1 S	6586304	25 Ncm	AT EV 3.0	6586262	AT EV 3.0 S	6586353		
	3.6		S	S	AT EV 3.6 GH1 S	6586312		AT EV 3.6	6586270	AT EV 3.6 S	6586361		
	4.2		M	L	AT EV 4.2 GH1 L	6586320		AT EV 4.2	6586288	AT EV 4.2 L	6586379		
	4.8		L	L	AT EV 4.8 GH1 L	6586338		AT EV 4.8	6586296	AT EV 4.8 L	6586387		
	5.4		XL	L	AT EV 5.4 GH1 L	6586346		AT EV 5.4	6593714	AT EV 5.4 L	6586395		

Subject to technical changes and errors in the text. Order No. A91100-1443-B680-01-7600_0822

Manufacturer / Implant				TiBase ^{1),5)}			Abutment Screw ^{2),5)}			ScanPost ^{3),5)}		
Implant diameter	Platform	Con-nection	REF	Quantity in units	Tightening torque	REF	Quantity in units	REF	Quantity in units			
Dentsply Sirona Implants AstraTech Osseospeed TX	3.5 S / 4.0 S	 3.5 / 4.0	L	AT OS 3.5/4.0 L	6282532	25 Ncm	AT OS 3.5/4.0	6460344	AT OS 3.5/4.0 L	6431055		
	4.5 / 5.0 / 5.0 S	 4.5 / 5.0	L	AT OS 4.5/5.0 L	6282540		AT OS 4.5/5.0	6460443	AT OS 4.5/5.0 L	6431063		
Dentsply Sirona Implants Ankylos	A, B, C, D	C/X	S	ANK C/GH1 S	6586528	15 Ncm	nicht erhältlich		ANK S	6586569		
				ANK C/GH2 S	6586536							
				ANK /X GH1 S	6586544							
				ANK /X GH2 S	6586551							
Dentsply Sirona Implants Frialit / Xive	3.4	 3.4	S	FX 3.4 S	6282433	25 Ncm	FX 3.4, 3.8, 4.5, 5.5	6460476	FX 3.4 S	6430891		
	3.8	 3.8	S	FX 3.8 S	6282441				FX 3.8 S	6430909		
	4.5	 4.5	L	FX 4.5 L	6282458				FX 4.5 L	6430917		
	5.5	 5.5	L	FX 5.5 L	6282466				FX 5.5 L	6430925		



Manufacturer / Implant				TiBase ^{1),5)}				Abutment Screw ^{2),5)}			ScanPost ^{3),5)}		
	Implant diameter	Platform	Con-nection		REF	Quantity in units	Tightening torque		REF	Quantity in units		REF	Quantity in units
Biomet 3i Certain [®] (Internal connection)	3.4	 3.4	S	B C 3.4 S	6308048		20 Ncm	B C 3.4, 4.1, 5.0	6460450		B C 3.4 S	6431212	
	4.1	 4.1	L	B C 4.1 L	6308097						B C 4.1 L	6431220	
	5	 5.0	L	B C 5.0 L	6308121						B C 5.0 L	6431238	
Biomet 3i External hex	3.4	 3.4	L	B O 3.4 L	6282557		35 Ncm	B O 3.4, 4.1, 5.0	6460468		B O 3.4 L	6431089	
	4.1	 4.1		B O 4.1 L	6282565						B O 4.1 L	6431105	
	5	 5.0		B O 5.0 L	6282573						B O 5.0 L	6431113	
BioHorizons (Internal connection)	3.0 / 3.8	 3.0	S	BH 3.0 S	6532779		30 Ncm	BH 3.0	6561240		BH 3.0 S	6532761	
	3.0/3.5/3.8/4.0/4.6	 3.5	L	BH 3.5 L	6532894						BH 3.5 L	6532886	
	4.0/4.6/5.0/5.8	 4.5	L	BH 4.5 L	6532951						BH 4.5 L	6532944	
	5.0/5.8/6.0	 5.7	L	BH 5.7 L	6536242						BH 5.7 L	6536234	
Nobel Biocare Replace (3-channel internal connection)	3.5	 NP	L	NB RS 3.5 L	6282474		35 Ncm	NB RS 3.5	6460526		NB RS 3.5 L	6430933	
	4.3	 RP		NB RS 4.3 L	6282482						NB RS 4.3 L	6430941	
	5	 WP		NB RS 5.0 L	6282490						NB RS 5.0 L	6430958	
	6	 6.0		NB RS 6.0 L	6282508						NB RS 6.0 L	6430982	
Nobel Biocare Nobel Active (Internal conical connection)	3.5	 NP	L	NB A 4.5 L	6308188		25 Ncm	NB A 4.5	6460484		NB A 4.5 L	6431279	
	4.3 / 5.0	 RP		NB A 5.0 L	6308253		35 Ncm	NB A 5.0	6460492		NB A 5.0 L	6431287	
Nobel Biocare Brånemark [®]	3.3	 NP	L	NB B 3.4 L	6282516		35 Ncm	NB B 3.4	6460500		NB B 3.4 L	6431006	
	3.75 / 4.0	 RP		NB B 4.1 L	6282524						NB B 4.1	6460518	



Manufacturer / Implant	Implant diameter	Platform	Con- nection	TiBase ^{1),5)}				Abutment Screw ^{2),5)}				ScanPost ^{3),5)}	
				REF	Quantity in units	Tightening torque	REF	Quantity in units	REF	Quantity in units			
Osstem (USA: Hiossen) Osstem TS (USA: Hiossen ET)	3.5	Mini	L	O TS 3.5 L	6527035		20 Ncm	O TS 3.5	6561208		O TS 3.5 L	6534197	
	4.0/4.5/5.0/6.0/7.0	Standard		O TS 4.0 L	6527043		30 Ncm	O TS 4.0	6561232		O TS 4.0 L	6536846	
Straumann Standard Tissue Level	3.3 / 4.1 / 4.8	RN (4.8 mm)	L	S SO 4.8 L	6284249		35 Ncm	S SO 4.8, 6.5	6460567		S SO 4.8 L	6431170	
	4.8	WN (6.5 mm)		S SO 6.5 L	6284256			S SO 6.5 L	6431196				
Straumann Bone Level	3.3	NC (3.3 mm)	L	S BL 3.3 L	6308154		35 Ncm	S BL 3.3, 4.1	6460542		S BL 3.3 L	6431246	
	4.1 / 4.8	RC (4.1 mm / 4.8 mm)		S BL 4.1 L	6308337			S BL 4.1 L	6431253				
Thommen Medical SPI Element, SPI Contact, SPI Element Inicell, SPI Contact Inicell	3.5	3.5	S	TM 3.5 S	6531854		25 Ncm	TM 3.5, 4.0, 4.5, 5.0, 6.0 6561273	6561265		TM 3.5 S	6544386	
	4	4		TM 4 S	6532829				TM 4 S	6544394			
	4.5	4.5		TM 4.5 S	6532837				TM 4.5 S	6544402			
	5	5		TM 5 S	6544360				TM 5 S	6544410			
	6	6		TM 6 S	6544378				TM 6 S	6544428			
Zimmer Tapered Screw-Vent	3.7 / 4.1	3.5	L	Z TSV 3.5 L	6282581		30 Ncm	Z TSV 3.5, 4.5, 5.7 6460575			Z TSV 3.5 L	6431139	
	4.7	4.5		Z TSV 4.5 L	6282599				Z TSV 4.5 L	6431147			
	6	5.7		Z TSV 5.7 L	6282607				Z TSV 5.7 L	6431154			